


Educational booklet warning signs for Autism Spectrum Disorder – ASD

 <https://doi.org/10.56238/sevened2024.002-039>

Leila Maués Oliveira Hanna¹, Felipe Eduardo Andrade Sousa², Gustavo Lima Toledo³, Bárbara Waléria Gonçalves Alves⁴, Sofia Lorenzoni House⁵, Caio Henrique Silva da Silva⁶, Ingrid Vitória Genú Mendes de Sousa⁷, Julianne de Paiva Batista⁸, Guilherme Lima Toledo⁹ and Thayse Moraes de Moraes¹⁰

ABSTRACT

Autism Spectrum Disorder (ASD) is the condition of individuals with delays in neurocognitive development, which become marked before the age of three. Determining the characteristics for a stable and reliable diagnosis requires knowledge of the main signs and symptoms related to ASD, such as restricted/repetitive patterns of behavior, interests or activities and deficits in communication and social interaction.

Keywords: Autism Spectrum Disorder, Signs and Symptoms, Health Education.

¹ Doctor in Pediatric Dentistry from Cruzeiro do Sul University. Professor of Medicine at the State University of Pará (UEPA).

² Academic of the Medicine Course at the State University of Pará (UEPA).

³ Academic of the Medicine Course at the State University of Pará (UEPA).

⁴ Medical student at the State University of Pará (UEPA).

⁵ Medical student at the State University of Pará (UEPA).

⁶ Medical student at the State University of Pará (UEPA).

⁷ Medical student at the State University of Pará (UEPA).

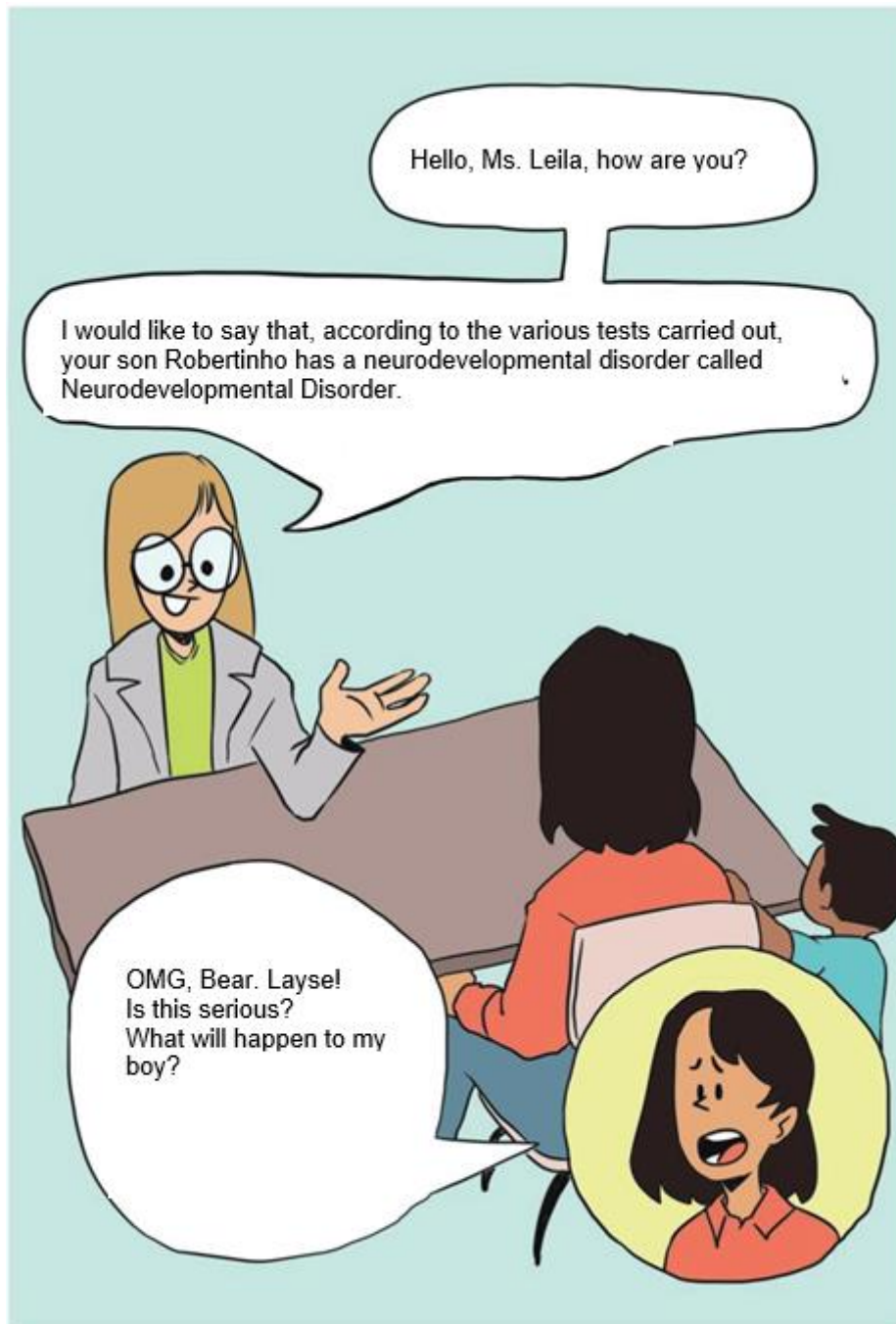
⁸ Medical student at the State University of Pará (UEPA).

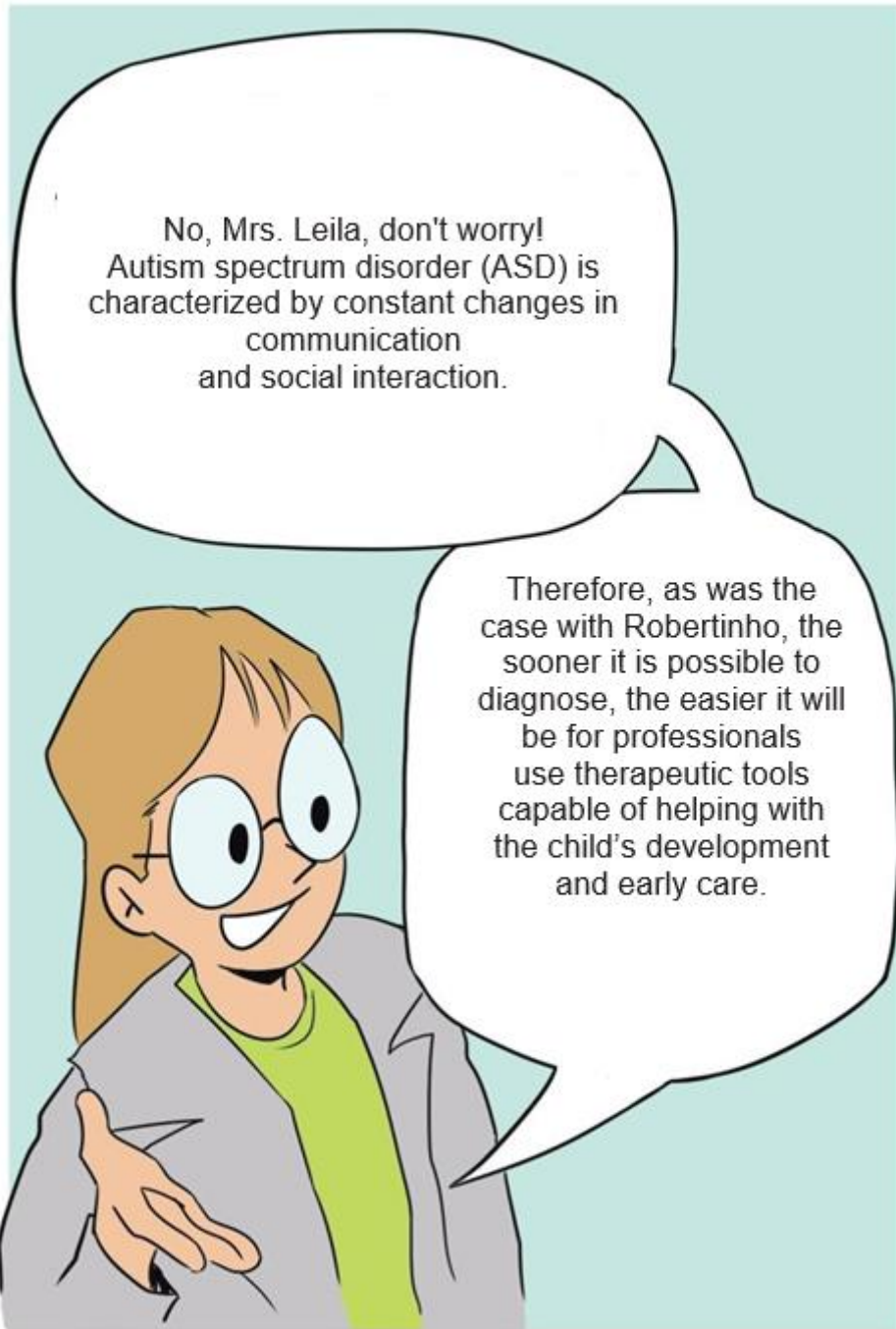
⁹ Student at the School of Advertising and Marketing (ESPM)

¹⁰ Master's degree in nursing UFPA. Professor of Medicine at the State University of Pará (UEPA).

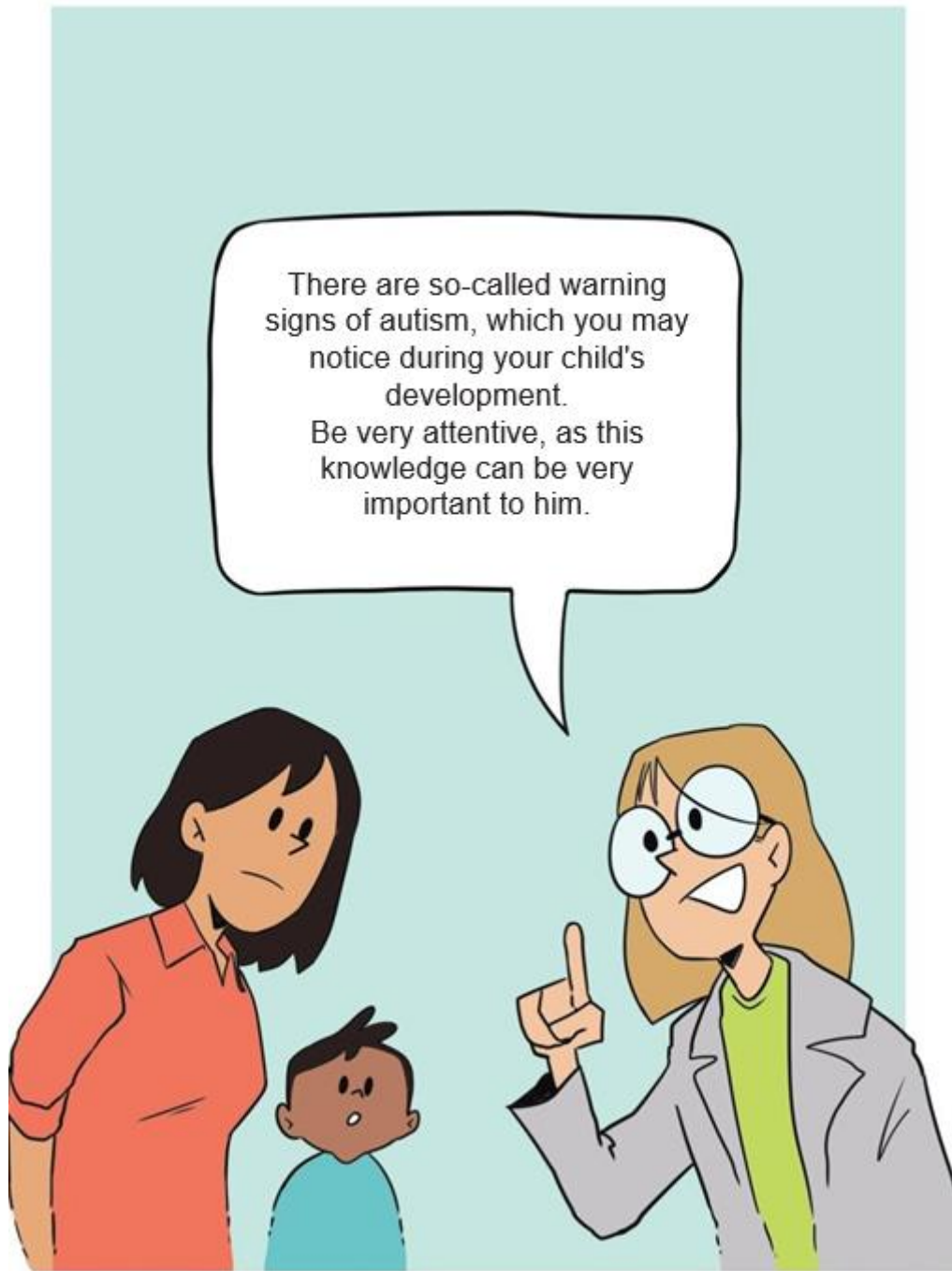


INTRODUCTION





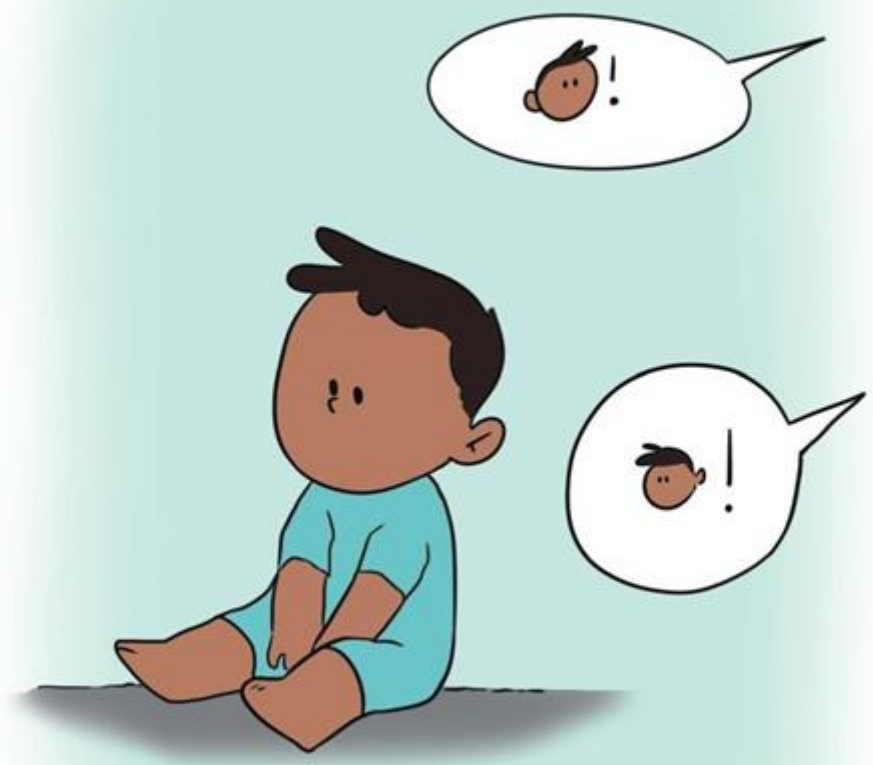




At 2 months,
the child is now able to maintain eye contact.



Babies respond (pay attention) when called by their name. This is considered a milestone in typical development from 6 to 9 month of age.

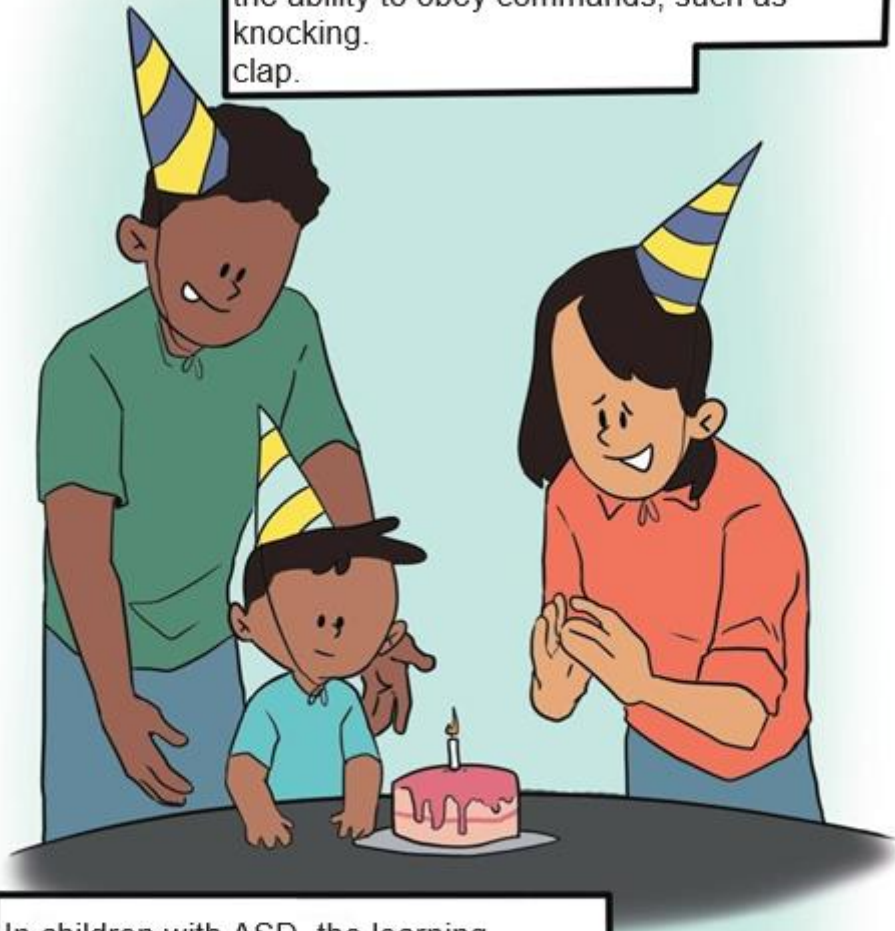


Even without any hearing impairment, children with ASD do not respond to these calls

Between 8 months and 1 year, the child does not point to where he wants to draw attention, and may use other people's fingers to indicate, but almost never his own.



Between 1 year and 3 months and 1 year and 6 months, children begin to develop the ability to obey commands, such as knocking. clap.



In children with ASD, the learning process must be carefully monitored, as they often experience delays and may have difficulty obeying simple commands like this.



Another possible sign is the child showing repetitive movements with toys or their own body, such as shaking their hands.



The child may also show fixation on objects, toys, characters and even repeat words related to the fixation.



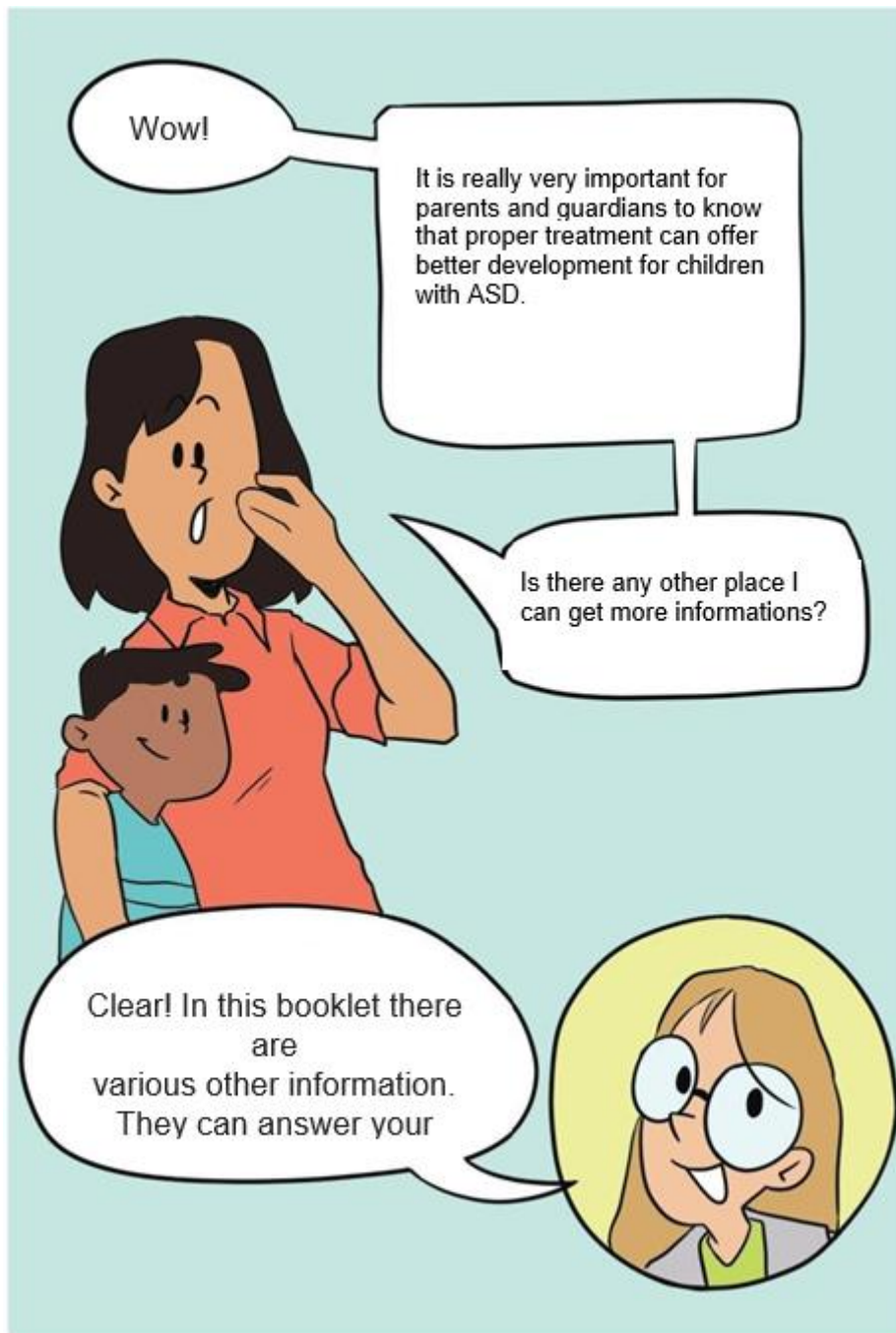
It is common for children to have some difficulty leaving their comfort zone, showing resistance to things that are outside their routine, be it food, clothing or other activities.



Furthermore, many children with ASD are not aware of danger. Therefore, parents must always be vigilant to prevent them from ending up in dangerous situations.







LIST OF POSSIBLE SIGNS OF CHILDREN WITH TEA

Repetitive and stereotyped movements (shaking hands, running aimlessly, spinning objects, tiptoeing)

Avoid eye contact

Social isolation

Speech disorder

Speech delay

Sensory hypersensitivity

Doesn't respond to the name

Object fixation

Resistance to breaking out of routine

Doesn't understand gestures

Can't sketch or understand facial expressions

Learning difficulties

Difficulty maintaining social relationships

No social laughter

Echolalia (repetition of words)

Sensory hyposensitivity

Motor delay

Difficulty in playing and playing make-believe

Shows no affection

Motor damage

Regression in non-verbal language

Difficulty maintaining joint attention

It doesn't





LIST OF POSSIBLE SIGNS OF CHILDREN WITH TEA
No imitation
Stagnation and regression in verbal language
Impaired receptive language
Irritation/tantrums
Food selectivity
Difficulty sleeping
Stereotyped speech
Attention deficit
Apathy (loss of interest and enthusiasm)
Prefers objects to people
Doesn't follow commands
Do not share objects
Low muscle tone
Don't visually follow someone pointing
Don't ask
Aggressiveness
Impulsiveness
Difficulty in initiating and responding to demand
Don't cry
Excessive attachment to one person
Hyperactivity
Hypoactivity
Not attracted to sounds

- Can autism be cured?

No. That's because Autism Spectrum Disorder (ASD), despite what many people believe, is not a disease. It is a condition related to neurodevelopment, encompassing various factors, mainly related to social communication, language development, behavior and motor development. In this sense, there are various methods of intervention aimed at improving the development of children with ASD and compensating for the possible deficits caused by its broad spectrum.

Thus, the earlier the disorder is identified, the more easily the specialized professional can use tools that stimulate other parts of the brain so that the child is able to achieve autonomy and independence and improve their social skills.

- Do you know why it's a "spectrum"?



It is important to emphasize that ASD encompasses a variety of factors that influence the symptoms presented, the severity, the level of development and even the diagnosis made by the doctor, characterizing each individual as unique and should have a specific type of specific monitoring provided by specialized professionals.

- According to Law 12.764/2012, paragraph 2, a person with autism spectrum disorder is considered a person with a disability for all legal purposes.

Therefore, in order for them to be included in society, they need special care.

Autism Spectrum Disorder (ASD) does not cause lifelong loss of knowledge and functionality, as it does in degenerative diseases. Some people with autism may have behavioral changes, especially in adolescence, but most improve over time. Even with ASD, many people can be independent and in control of their own actions and decisions. However, some may need help organizing and planning certain activities.

It is important to know that the autistic population has a higher risk of developing anxiety and depression. Therefore, it is essential to offer her support and understanding.

Therefore, therapeutic practices tend to help them minimize the impairments caused by the disorder, in addition to stimulating the development of social skills and providing a promising professional future.

Several relevant personalities have been diagnosed with ASD and have managed to succeed in their careers, such as Anthony Hopkins, Elon Musk, Susan Boyle and Bill Gates.





REFERENCES

1. American Psychiatric Association - APA. (2014). Manual diagnóstico e estatístico de transtornos mentais: DSM-5. Porto Alegre: Artmed.
2. Steyer, S., Lamoglia, A., & Bosa, C. A. (2018). A Importância da Avaliação de Programas de Capacitação para Identificação dos Sinais Precoces do Transtorno do Espectro Autista - TEA. *Trends Psychol.*, 26, 1395--1410.
3. Steigleder, B. G., Bosa, C. A., & Sbicigo, J. B. (2021). Early Signs of Autism Spectrum Disorder: Validity Evidence of the PROTEA-R-NV. *Avaliação Psicológica, 20*(3), 331-340.
4. Zwaigenbaum, L., Bryson, S., Rogers, T., Roberts, W., Brian, J., & Szatmari, P. (2005). Behavioral manifestations of autism in the first year of life. *Int J Dev Neurosci, 23*(2-3), 143-152.
5. Landa, R. J., Gross, A. L., Stuart, E. A., & Faherty, A. (2013). Developmental trajectories in children with and without autism spectrum disorders: the first 3 years. *Child Dev, 84*(2), 429-442.
6. Bai, D., Yip, B. H. K., Windham, G. C., Sourander, A., Francis, R., Yofe, R., et al. (2019). Association of Genetic and Environmental Factors With Autism in a 5-Country Cohort. *JAMA Psychiatry, 76*(10), 1035-1043.
7. Shatuck, P. T., Durkin, M., Maenner, M., Newschafer, C., Mandel, D. S., Wiggins, L., et al. (2009). Timing of identification among children with an autism spectrum disorder: findings from a population-based surveillance study. *J Am Acad Child Adolesc Psychiatry, 48*(5), 474-483.
8. Shaw, K. A., McArthur, D., Hughes, M. M., Bakian, A. V., Le, L.-C., Pettygrove, S., et al. (2021). Progress and Disparities in Early Identification of Autism Spectrum Disorder: Autism and Developmental Disabilities Monitoring Network, 2002-2016. *J Am Acad Child Adolesc Psychiatry*. Advance online publication. doi:10.1016/j.jaac.2021.11.006
9. Pierce, K., Gazestani, V. H., Bacon, E., Barnes, C., Cha, D., Nalabolu, S., et al. (2019). Evaluation of the Diagnostic Stability of the Early Autism Spectrum Disorder Phenotype in the General Population Starting at 12 Months. *JAMA Pediatr, 173*(6), 578-587.
10. Bradshaw, J., Klin, A., Evans, L., Klaiman, C., Saulnier, C., & McCracken, C. (2020). Development of attention from birth to 5 months in infants at risk for autism spectrum disorder. *Development and Psychopathology, 32*(2), 491-501.
11. Silva, B. S., Carijo, D. T., Firmo, J. D. R., Freire, M. Q., Pina, M. F. Á. de, & Macedo, J. (2018). DIFICULDADE NO DIAGNÓSTICO PRECOCE DO TRANSTORNO DO ESPECTRO AUTISTA E SEU IMPACTO NO ÂMBITO FAMILIAR. *CIPEEX, 2*, 1086-1098. Recuperado de https://bvsmms.saude.gov.br/bvs/publicacoes/carta_ottawa.pdf.
12. Silva, A. C. G. da. (2010). Educação apoiada em tecnologias: desenvolvimento e avaliação de recursos didáticos para a formação de promotores de saúde [Tese de Doutorado, Universidade de São Paulo]. Recuperado de <http://www.teses.usp.br/teses/disponiveis/5/5144/tde-12032010-173030/>.
13. Vasconcelos, S. S., Gomes, I. L. V., Barbalho, E. V., Gouveia, S. S. V., & Gouveia, G. P. de M. (2018). Validação de uma cartilha sobre a detecção precoce do transtorno do espectro autista.



Revista Brasileira em Promoção da Saúde, 31(4). Recuperado de <https://periodicos.unifor.br/RBPS/article/view/8767>.

14. American Psychiatric Association - APA. Manual diagnóstico e estatístico de transtornos mentais: DSM-5. Porto Alegre: Artmed; 2014.
15. Steyer S, Lamoglia A, Bosa CA. A importância da Avaliação de Programas de Capacitação para Identificação dos Sinais Precoces do Transtorno do Espectro Autista - TEA. *Trends Psychol*. setembro de 2018;26:1395--410.
16. Steigleder BG, Bosa CA, Sbicigo JB. Early Signs of Autism Spectrum Disorder: Validity Evidence of the PROTEA-R-NV. *Avaliação Psicológica*. setembro de 2021;20(3):331-40.
17. Zwaigenbaum L, Bryson S, Rogers T, Roberts W, Brian J, Szatmari P. Behavioral manifestations of autism in the first year of life. *Int J Dev Neurosci*. maio de 2005;23 (2-3):143-52.
18. Landa RJ, Gross AL, Stuart EA, Faherty A. Developmental trajectories in children with and without autism spectrum disorders: the first 3 years. *Child Dev*. abril de 2013;84(2):429-42.
19. Bai D, Yip BHK, Windham GC, Sourander A, Francis R, Yofe R, et al. Association of Genetic and Environmental Factors With Autism in a 5-Country Cohort. *JAMA Psychiatry*. 10 de outubro de 2019;76(10):1035-43.
20. Shatuck PT, Durkin M, Maenner M, Newschafer C, Mandel DS, Wiggins L, et al. Timing of identification among children with an autism spectrum disorder: findings from a population-based surveillance study. *J Am Acad Child Adolesc Psychiatry*. maio de 2009;48(5):474-83.
21. Shaw KA, McArthur D, Hughes MM, Bakian AV, Le L-C, Pettygrove S, et al. Progress and Disparities in Early Identification of Autism Spectrum Disorder: Autism and Developmental Disabilities Monitoring Network, 2002-2016. *J Am Acad Child Adolesc Psychiatry*. 24 de novembro de 2021;50890-8567(21)02000-1.
22. Pierce K, Gazestani VH, Bacon E, Barnes C, Cha D, Nalabolu S, et al. Evaluation of the Diagnostic Stability of the Early Autism Spectrum Disorder Phenotype in the General Population Starting at 12 Months. *JAMA Pediatr*. 10 de junho de 2019;173(6):578-87.
23. Bradshaw J, Klin A, Evans L, Klaiman C, Saulnier C, McCracken C. Development of attention from birth to 5 months in infants at risk for autism spectrum disorder. *Development and Psychopathology*. maio de 2020;32(2):491-501.
24. Silva BS, Carijo DT, Firmo JDR, Freire MQ, Pina MFÁ de, Macedo J. DIFICULDADE NO DIAGNÓSTICO PRECOCE DO TRANSTORNO DO ESPECTRO AUTISTA E SEU IMPACTO NO ÂMBITO FAMILIAR. *CIPEEX*. 2018;2:1086-98.
25. Elder JH, Kreider CM, Brasher SN, Ansel M. Clinical impact of early diagnosis of autism on the prognosis and parent-child relationships. *Psychol Res Behav Manag*. 24 de agosto de 2017;10:283-92.
26. Ercole FF, Melo LS de, Alcoforado CLGC. Integrative review versus systematic review. *Reme: Revista Mineira de Enfermagem*. 2014;18(1).
27. Mendes KDS, Silveira CR de CP, Galvão CM. USO DE GERENCIADOR DE REFERÊNCIAS BIBLIOGRÁFICAS NA SELEÇÃO DOS ESTUDOS PRIMÁRIOS ME REVISÃO



INTEGRATIVA. *Texto & Contexto - Enfermagem*. 2019 Feb 14;28. Available from: <https://www.scielo.br/j/tce/a/HZD4WwnbqL8t7YZpdWSjypj/?lang=pt>

28. Page MJ, McKenzie JE, Bossuyt PM, Boutron I, Hoffmann TC, Mulrow CD, et al. The PRISMA 2020 statement: an Updated Guideline for Reporting Systematic Reviews. *British Medical Journal*. 2021 Mar 29;372(71):n71. Available from: <https://www.bmj.com/content/372/bmj.n71>
29. Shrestha R, Dissanayake C, Barbaro J. Implementing and evaluating Social Attention and Communication Surveillance (SACS) to prospectively identify autism in very young children in Nepal. *Research in Developmental Disabilities*. 2021 Aug;115:104013.
30. Wetherby AM, Guthrie W, Hooker JL, Delehanty A, Day TN, Woods J, et al. The Early Screening for Autism and Communication Disorders: Field-testing an autism-specific screening tool for children 12 to 36 months of age. *Autism*. 2021 May 7;136236132110125.
31. Kishore MT, Menon DK, Binukumar B. Development of a scale for identifying autism spectrum disorder during early childhood. *Indian Journal of Psychiatry*. 2018;60(4):438-44. Available from: <https://www.ncbi.nlm.nih.gov/pmc/articles/PMC6278203/>.
32. Nilsson Jobs E, Bölte S, Falck-Ytter T. Spotting Signs of Autism in 3-Year-Olds: Comparing Information from Parents and Preschool Staff. *Journal of Autism and Developmental Disorders*. 2018 Nov 21;49(3):1232-41.
33. Locke J, Ibanez LV, Posner E, Frederick L, Carpentier P, Stone WL. Parent Perceptions About Communicating With Providers Regarding Early Autism Concerns. *Pediatrics*. 2020 Apr 1[cited 2020 Jul 21];145(- Supplement 1):S72-80. Available from: https://pediatrics.aappublications.org/content/145/Supplement_1/572
34. Larsen K, Aasland A, Diseth TH. Brief Report: Agreement Between Parents and Day-Care Professionals on Early Symptoms Associated with Autism Spectrum Disorders. *Journal of Autism and Developmental Disorders*. 2017 Oct 30;48(4):1063-8.
35. Montagut-Asunción M, Crespo-Martin S, Pastor-Cerezuela G, D'Ocon-Giménez A. Joint Attention and Its Relationship with Autism Risk Markers at 18 Months of Age. *Children*. 2022 Apr 13;9(4 Becerra-Culqui TA, Lynch FL, Owen-Smith AA, Spitzer J, Croen LA. Parental First Concerns and Timing of Autism Spectrum Disorder Diagnosis. *Journal of Autism and Developmental Disorders*. 2018 May 12;48(10):3367-76.
36. Gao J, Duan Y, Lin S, Yang P, Song H, Li Q, et al. Combined symptoms of social communication impairments: promising signs for early screening of autism. [Internet]. [cited 2022 Aug 16]. Available from: <https://www.alliedacademies.org/articles/combined-symptoms-of-social-communication-impairments-promising-signs-for-early-screening-of-autism.pdf>
37. Zablotsky B, Colpe LJ, Pringle BA, Kogan MD, Rice C, Blumberg SJ. Age of Parental Concern, Diagnosis, and Service Initiation Among Children With Autism Spectrum Disorder. *American Journal on Intellectual and Developmental Disabilities*. 2017 Jan;122(1):49-61.
38. Serdarevic F, Ghassabian A, van Batenburg-Eddes T, White T, Blanken LME, Jaddoe VWV, et al. Infant muscle tone and childhood autistic traits: A longitudinal study in the general population. *Autism Research*. 2017 Feb 9;10(5):757-68.



39. Quatrosi G, Nardelo R, Misuraca E, Scarinci A, Di Folco A, Marotta R. Precocious diagnostic elements in autism spectrum disorders. **Acta Medica Mediterranea** [Internet]. 2020 [cited 2022 Aug 16];36:1945. Available from: <https://www.actamedicamediterranea.com/archive/2020/medica-3/precocious-diagnostic-elements-in-autism-spectrum-disorders/document>
40. Mahapatra P, Pati S, Sinha R, Chauhan AS, Nanda RR, Nalala S. Parental care-seeking pathway and challenges for autistic spectrum disorders children: A mixed method study from Bhubaneswar, Odisha. **Indian Journal of Psychiatry** [Internet]. 2019;61(1):37-44. Available from: <https://www.ncbi.nlm.nih.gov/pmc/articles/PMC6341916/>
41. Stenberg K, Maaranen K. The differences between beginning and advanced student teachers' teacher identities based on their practical theories. **Education Inquiry**. 2020 Jan 22;1-15.
42. Ramires da Silva Rde C, de Lima Raimundo AC, Oliveira dos Santos CT, Santana Vieira AC. Construção de cartilha educativa sobre cuidados com crianças frente à pandemia COVID-19: Relato de experiência. **Revista baiana de enfermagem** [Internet]. 18 de agosto de 2020.